



AiFOS
Supporti Didattici

AiFOS

Associazione Italiana Formatori ed
Operatori della Sicurezza sul Lavoro



Occupational risks

Legislative Decree 81/2008, art. 37
Agreement Government-Regions 21/12/11 and 07/07/16

LE NOSTRE CERTIFICAZIONI

Associazione professionale che rilascia l'Attestato di qualità e di qualificazione professionale dei servizi prestati dai soci (elenco del Ministero dello Sviluppo Economico. Legge n. 4/2013)



Confcommercio - Imprese per l'Italia

Rappresentanza associazione nazionale di categoria



Regione Lombardia

Regione Lombardia

Albo Regionale operatori "Lombardia Eccellente" Decreto n. 10678/2009

Albo operatori accreditati per la formazione n. 164



Certificato Sistema di Qualità KIWA

Azienda Certificata ISO 9001:2015 n.18025/08/S

Certificazioni di AiFOS



Agenzia Europea per la salute e la sicurezza sul lavoro (OSHA)

Partner della campagna europea "Ambienti di lavoro sani e sicuri"



CIIP Consulta Italiana Interassociativa per la Prevenzione



Ministero dell'Università e della Ricerca

Anagrafe Nazionale Ricerche, prot. n.109/496 codice 57811NYF



Vision Zero , Campagna di cultura della prevenzione di sicurezza, salute e benessere

Work Environments



Work Environments

Definition

Work environments are:

- places intended to **host** workplaces
- places that are **accessible** to the worker during the course of his/her activity



Work Environments: Requirements



Buildings housing work environments must comply with safety **requirements**:

- stability, solidity, cleanliness
- height and area
- stairs, floors, walls, ceilings, windows and skylights, doors
- traffic routes, danger areas, emergency routes and exits
- workplaces and passageways

Electrical Risk



Electricity

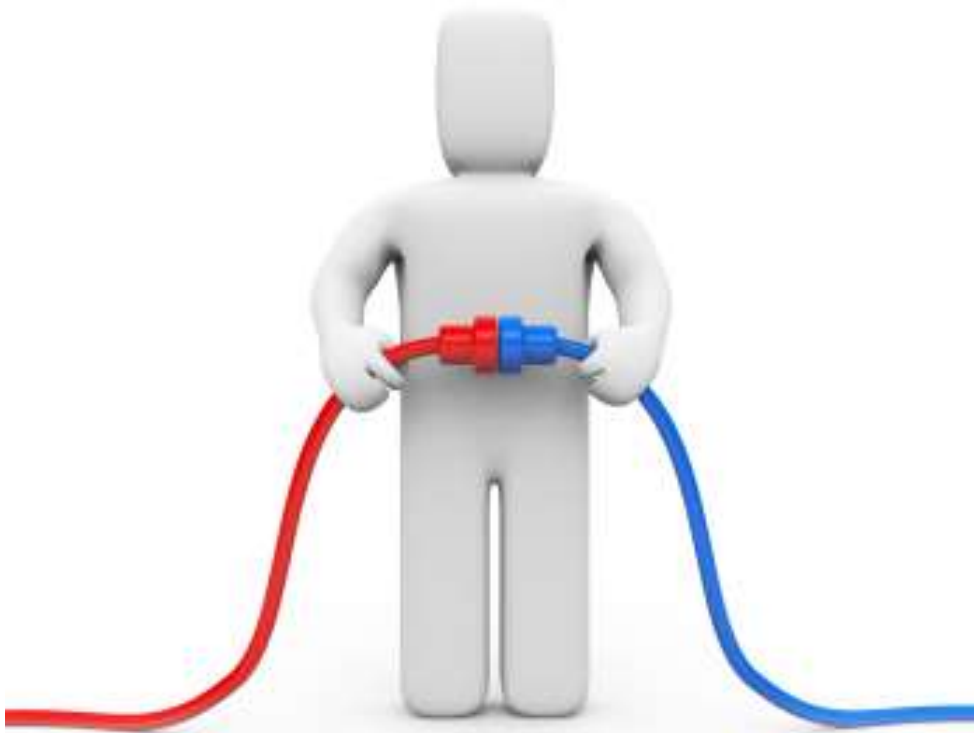
(1)

- Electric current consists of a **flow of electrical charges** (electrons) that takes place inside some materials
- **Conductors**: materials that allow the **passage** of electric current
- **Insulators**: materials that do **not** allow the passage of electric current



Electricity

(2)



Conductors

- Metals (copper, silver, aluminum)
- Organic tissues (the human body)

Insulators

- Glass
- Marble
- Plastic
- Rubber
- Cork
- Wood
- Paper

Video Display Terminal



Some Definitions

- By **video display terminal** we mean an "alpha-numeric or graphic screen"
- By **workplace** we mean "the set that includes equipment equipped with a video display terminal or other data entry system, including the telephone, printer, etc., as well as the immediate surrounding work environment"
- "By **worker** we mean "anyone who uses equipment equipped with video terminals, systematically or habitually, for twenty **hours a week**, minus interruptions"



Interruptions



- The worker has the right to a **15-minute interruption** of the activity, by means of breaks or a change of activity, every one hundred and twenty minutes of continuous application at the display screen
- The **break** is considered to all intents and purposes an integral part of working hours

Work-related Stress



Work-related Stress

(1)

- Organized work is related to the traditional term “fatigue”
- The term **stress** is defined as **non-physical fatigue**
- These are the activities where the mechanism of **mental actions** is strongly stimulated by the type of task to be carried out



Work-related Stress

(2)



- From the concept of fatigue, we **move on** to:
 - ✓ level of **mental load**
 - ✓ **stress** at **work**
- The characteristic of stress, understood as a general syndrome of adaptation, is that of being a **non-specific subjective reaction** to different stimuli.

Falling From Heights



Falling From Heights



- **Falling from heights** is one of the major causes of injury, often fatal, and is due to the failure of observing the rules and of taking the minimum measures of protection!
- Superficiality, useless acrobatics, habits or rather, bad habits affect the **incorrect** behavior of workers!

Working at Heights

“**Work at heights**” not only refers to building and construction activities, but to all work activities that expose workers to the risk of falling from a height greater than **2 meters** with respect to a ground level!



Hazardous Substances



Chemical Agents



A bit of background information

Legislative Decree no. 81/2008 defines chemical agents: "**elements** or **chemical compounds** in their natural state or obtained, used or disposed of through any work activity, whether they are produced intentionally or not and are placed on the market or not".

The Chemical Risk

A chemical risk can lead to:

- **safety risks** (fire, explosion, contact with aggressive and/or corrosive substances that can cause burns, degradation and corrosion of the systems)
- **health risks** (exposure to toxic and harmful substances which, if absorbed, lead to intoxication or to the development of occupational diseases)



Physical Agents: Noise

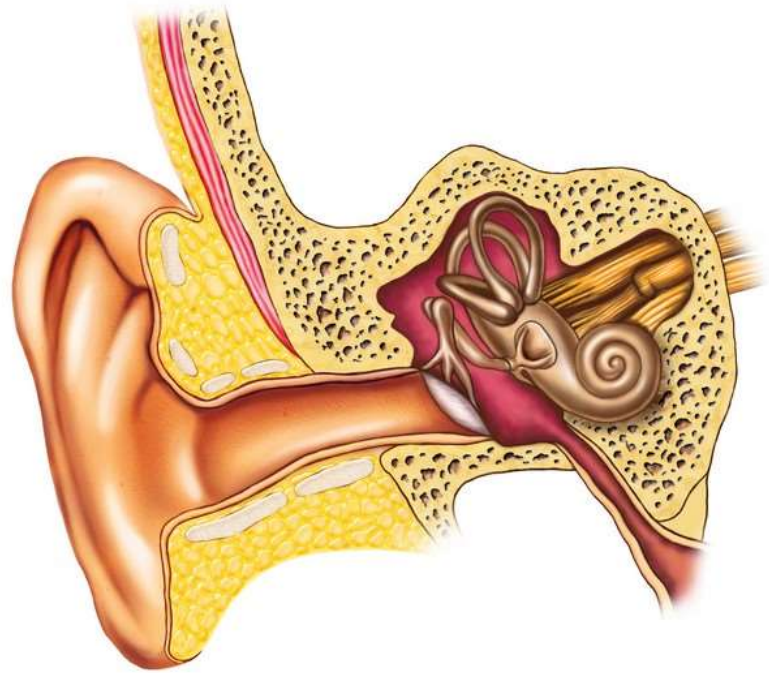


What Are the Physical Agents?

- A specific section of Legislative Decree n. 81/2008 is devoted to the general provisions regarding physical agents!
- Physical agents are:
 - ✓ **noise**
 - ✓ **mechanical vibrations**
 - ✓ **electromagnetic fields**
 - ✓ **optical radiations**



Noise: Effects on Humans



Noise has immediate effects on health:

- **discomfort**, subjective feeling of discomfort which usually does not follow any organic effect
- reversible alteration **disorder** after a period of rest away from the source
- **damage**, irreversible alteration

AiFOS



*Se ci scambiamo una moneta
avremo entrambi una moneta
Se ci scambiamo un'idea
avremo entrambi due idee*

Grazie per l'attenzione